

NEPAL



FACTS: Pop: 29.6 mn, GDP: USD 36.5 bn, Per Capita: USD 1223, GDP Growth: 4.2% (5.8% FY22), Inflation: 8.5% (4.4% : 3 mnths back), Remittance: 24% of GDP, Agri: 32% of GDP / 65% of Pop., Gov Debt to GDP: 40%

P. J. P. N. & Co.
Chartered Accountants

Kathmandu, Nepal

The Firm



Established
1995

Location
Kathmandu/
Nepal

Partners
3
Team
60+

DFK
Member
Since
2019

Our Partners



Prakash Jung Thapa

FCA, CA (ANZ), CFA, MBA, ISA



Parakram Nath Sharma

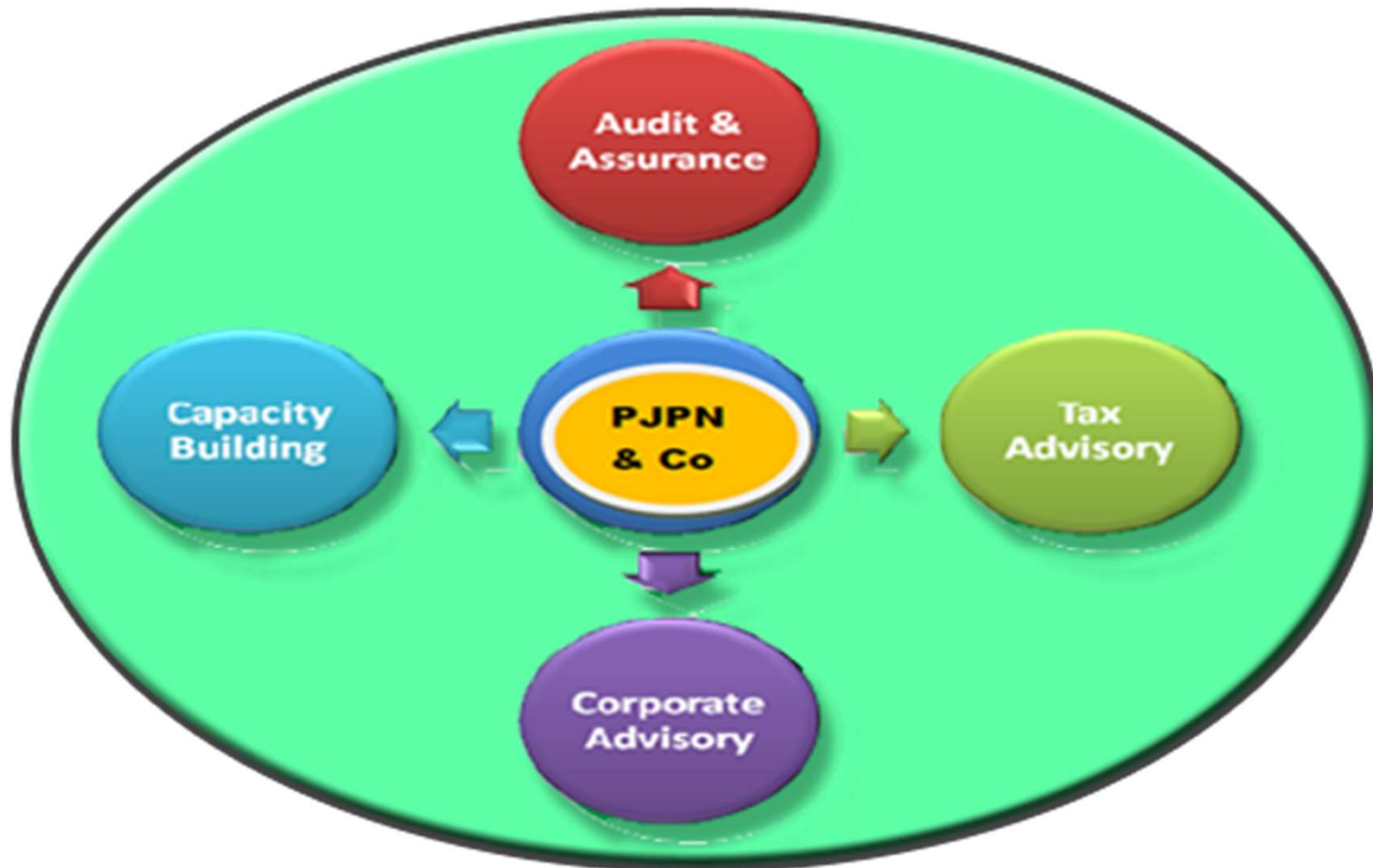
FCA, CFA



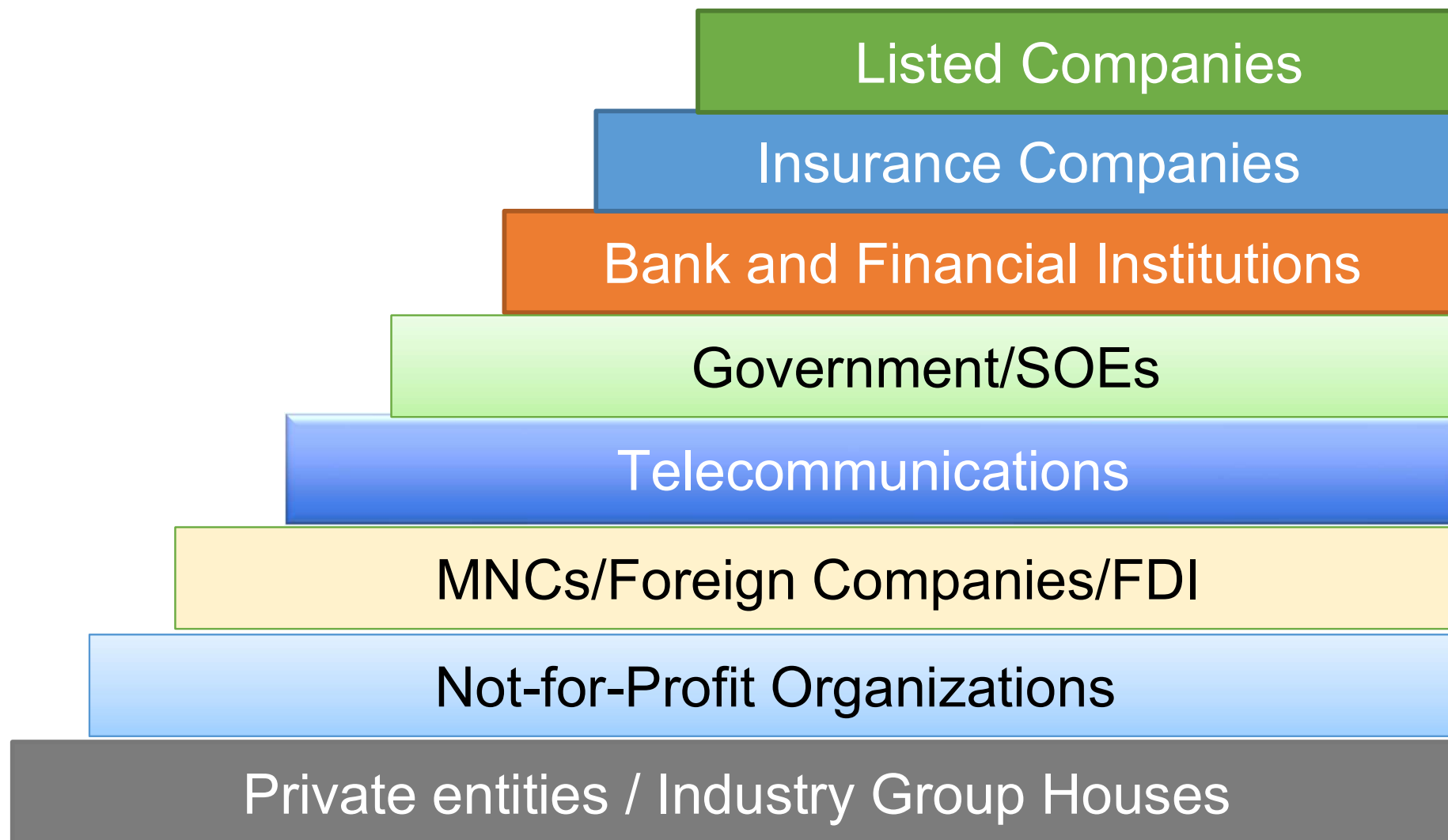
Nirdesh Shrestha

FCA, LL.B MBS

Our Services



Our Clients /Portfolio



Our Team



PARTNERS

3

Client Service Managers

9

Professional staff

35

Admin Staff

8

Consultants

6

ANY QUESTIONS?

