

The Pathway to Partner

By Angela Yu
Director – Audit & Assurance,
Asian Business Relationships





Why are we here today

- To celebrate
- To recognise & acknowledge
- To share and listen to our own stories

Who am I

- An emerging leader
- On the pathway to partner at CIB



The Bond





Diversity & Inclusion

– my experience

What Diversity and Inclusion is:

- Race, religion, social economic background, gender, language, life stage
- Equal opportunity

Why it is important

- The diversity in the APAC region & Australia
- Multinationals, significant global entities in the region

At CIB

- We have global audits all over the world
- We have our team in the Philippines





Diversity & Inclusion

– my experience

What more can we do:

- We provide staff from similar experience and background
- We listen, understand and do not judge
- Our own stories: Abdullah, Deepak and myself





Inner Balance

– my own way

What inner balance is

- The definition of inner balance is not just about working out a way of balancing your daily or weekly time, focus and activities in the key areas of life, but it is also about appreciating the intrinsic balance of opposites that exist both within yourself and in the world around you

Why it is important

- Issues coming out of COVID
- Mental health
- Culture comes from the top
 - Happy leaders – retain your staff – happy clients

Inner Balance

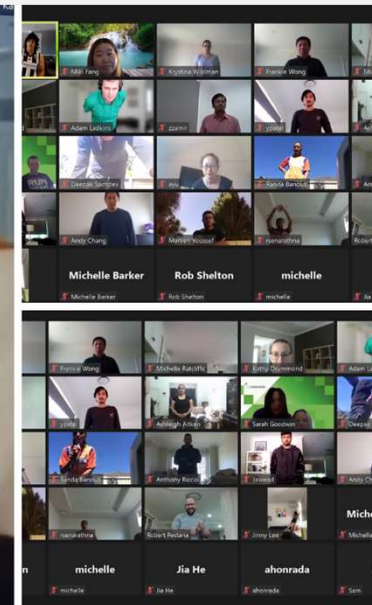
– my own way

What has been done:

- DFK ANZ – self-leadership energy Webinar by Katrina Web
- DFK ANZ – Julian Pace's Webinar – Finding Your Happy
- CIB - Several Firm Fitness Sessions over the lockdown
- CIB – Firm wide morning teas, trivia nights with themes

What you can do

- Find your way to let out and go
- Practice self-care, mindfulness
- Simply talk to someone





My Journey

– on the pathway

- What drives me – the passion
- My journey
 - Joined CIB in Nov 2015
 - DFK International Conference in 2017 & 2018
 - Managers conference in Darwin
 - DFK ANZ conference in May 2022
 - As an emerging leader:
 - IWLD mentoring program started in September 2021
 - Pathway to Partner program from July 2022



My Journey

– on the pathway

- What can we do more - to all experienced leaders and emerging leaders:
 - Share and pass kindness and love
 - Share and pass the knowledge and wisdom
 - mentor for the Lucy Mentoring Program organised by Macquarie University
 - guest speaker at Macquarie University
 - keynote speaker at International Management Conference in New Delhi in 2019
 - keynote speaker at Parahyangan Catholic University in Indonesia in 2022



The Final Message

- It is about me, but not all about me
- With respect and a open mind
- With care, love and kindness



Questions?



THANKS!

Thanks for your attention!

Contact us if you need assistance with your business, we provide:

- Tax Services
- Business Advice
- Business Valuations
- Superannuation Services
- Audit & Assurance
- Corporate finance



☎ 02 9683 5999

✉ Angela.Yu@cibaccountants.com.au

