



Setting up a company in Thailand

24 November 2022

PHATTANAN PINSAWAT
Department of Business Development



Today's content

What is DBD ?

Types of business
in Thailand

Characteristic of
company limited

How to register

DBD's
services

www.dbd.go.th



DBD's VISION

To become a leading state agency in providing a full suite of digital service within 2027 and to generate a dynamic mechanism for sustainable, innovation-driven growth of Thai commercial sector.





Type of Business Organization

1

Juristic Person

1. Registered Ordinary Partnership
2. Limited Partnership
3. Company Limited
4. Public Company Limited

2

Non-Juristic Person

1. Individual Owner
2. Ordinary Partnershi



Business Organization Registered at DBD

Ordinary

Limited Partnership

Company

Public Company



Company Limited

is that kind of company which is formed with a capital divided into number of shares, the liability of the shareholders being limited to the amount unpaid on the shares respectively held by them.





Get to know relevant parties

Promoter

a natural person who desires to establish a new company and proceeds with the steps of company incorporation.

Shareholder

a natural person or legal entity who legally holds a company's share at least 1 share

Director

a person who is appointed by shareholders and is responsible for the company's operation, with authority to act on behalf of the company.



Company Limited

- Promoters -

Must have at least 3 promoters,

(1) Be ordinary person, (Thai or Foreigner),
not juristic person

(2) Be 12 years old or older

(3) Each promoter must reserve to buy
at least 1 share

- Director-

At least 1 director.



- Capital/Shares -

Capital shall be divided equally as
shares.

- Address -

A registered corporate address in Thailand.



Procedures for Company Establishment (One-day Procedure)

Company Name Reservation
(online reservation only at www.dbd.go.th)

Minimum 3 Promoters file a Memorandum of Association

Arrange for share
reservation

Issue invitation letters for the statutory meeting





Procedures for Company Establishment (One-day Procedure)

Conduct the Statutory
meeting

Promoters hand over the business to the directors

Directors request for share
certificate

Company
Registration






(1) In the case where a partnership or limited company has a foreign partner or shareholder investing or holding shares constituting not more than 50 percent of investments or registered capital of a partnership or limited company.



(2) In the case where a limited company does not have a foreign shareholder but a foreign person is a director authorized to sign or jointly sign for a company.



Order No. 205/2555

A white decorative arrow pointing from the left towards the text.

An applicant for registration of establishment of a partnership or limited company shall submit documents and evidence issued by a bank to certify or show the financial standing of all partners or shareholders having Thai nationality in support of the application for registration.

A white decorative arrow pointing from the left towards the text.

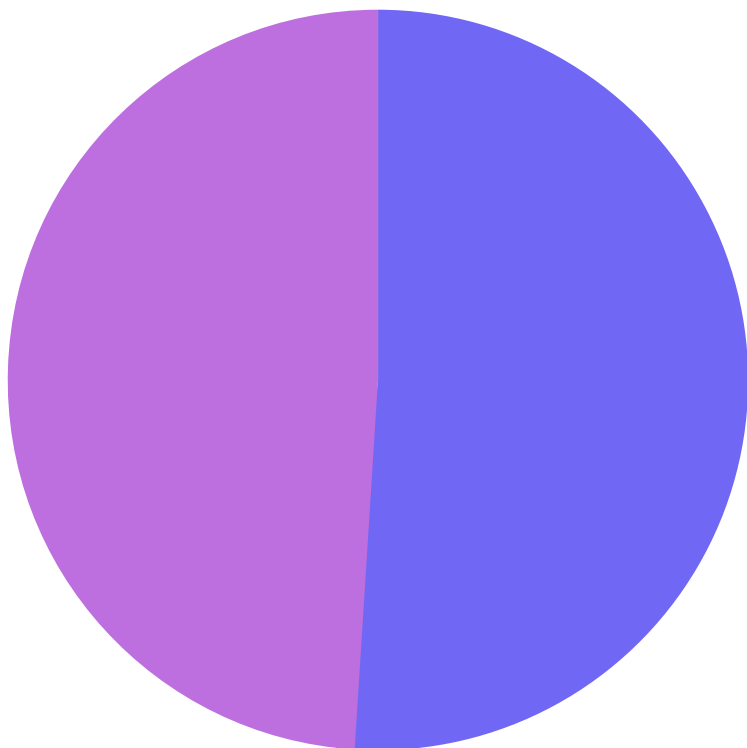
Such document must show the amounts of monies consistent with the sums invested in the shares of each partner or shareholder.



Order No. 205/2555

1

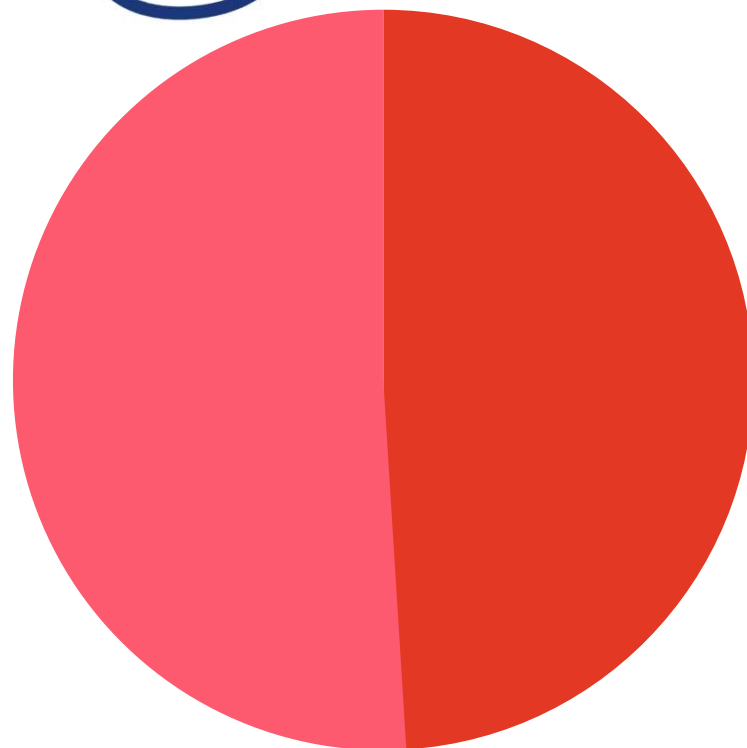
Foreigner
49%



Thai Company

2

Thai
51%



Foreign
Company



Benefits of a Company Limited

Limited
Liability

Fully
Control

Credibility
and
trust

Flexible

Foreign
ownership



Registration Service Channels



Offline Service

DBD provides service
through 87 nationwide offices



Online Service

24/7 Hours – 365 days
Service at your
fingertip



Place for Business Registration



87 Nationwide Offices

7 Bangkok areas

76 Provincial Offices

4 Businesses areas



First Time Registration

You can register at
anywhere



Further Registration

Submit document at DBD Office
where your head office is located





DBD e-Registration

2 Simple steps

Step 1

Enrollment & Identity Proofing

in order to obtain Username&Password used to access the e-Registration. This Username&Password shall be activated within 30 days from the approved date.

Convenient, Fast, TimeSaving



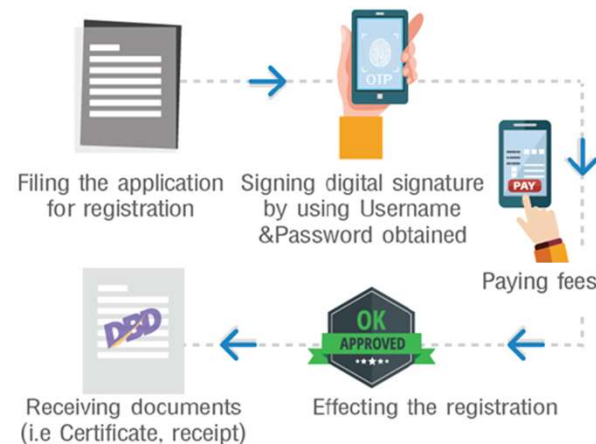
Step 2

Log in to e-Registration

by using Username&Password obtained in step 1.



" TO REGISTER A BUSINESS
is easy
...simply at fingertips"



4 options for Identity Proofing



e-KYC



Personal Certification



Self-identity proofing



Authorize to submit the identity proofing application

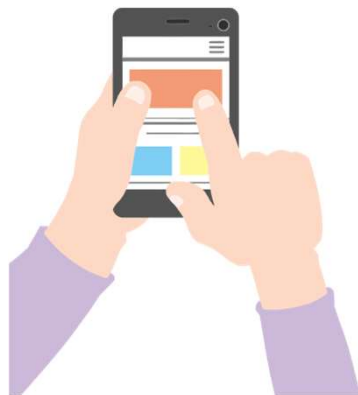
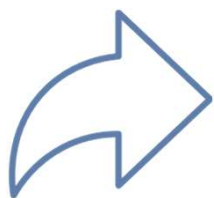
Use the service at : e-Registration Support Center

: Business Development Office 1-6

: Provincial Commercial Office and 4 branches
(Mae Sot, Pattaya, Hua Hin and Koh Samui)



DBD Business Support Service



DBD - e-Service



**“CHECK
BUSINESS
REGISTRATION
INFORMATION
VIA ONLINE
PLATFORM
AT YOUR
FINGER TIP”**





DBD Service Application



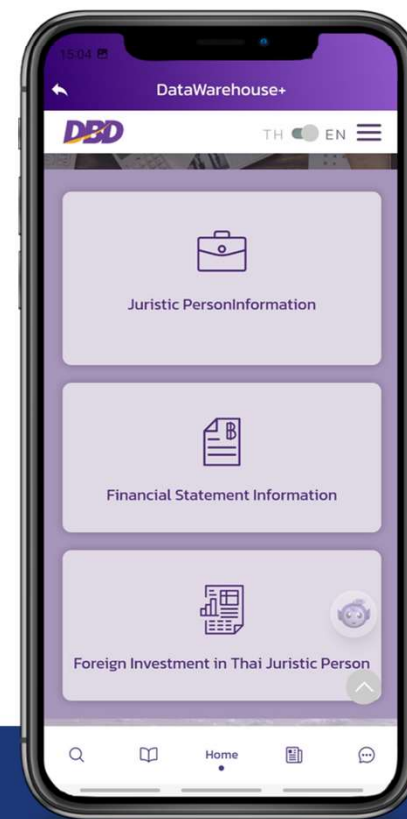
**Juristic
Personal
Information**



**Financial
Statement
Information**



**foreign
Investment
In Thai
Juristic
Personal**





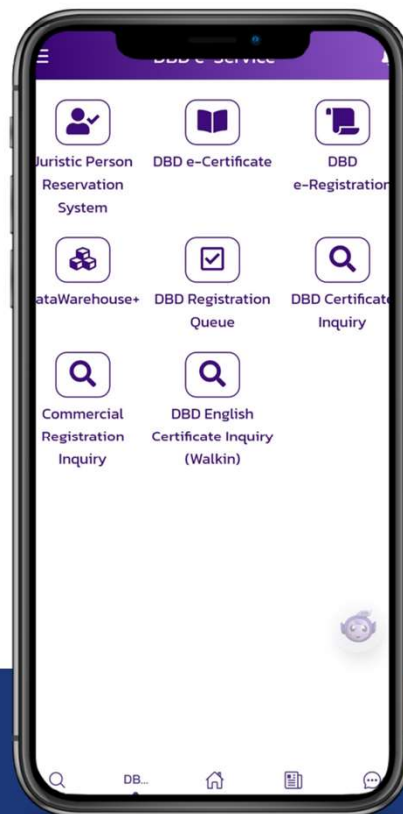
DBD Service Application

Juristic
Person

Reservation

DBD
Registration
Queue

Certificate of
Business
Registration





Business Registration Statics

Updated September 2022

There
are **846,954**
Businesses

Operating in
Thailand

Ranking the investment value by nationality (Ranking of the year 2022)

- Japanese (26.91%)
- 2. Singaporean (10.43%)
- 3. Chinese (7.39%)
- 4. American (4.01%)





Act amending on the Civil and Commercial Code, (No.23) B.E. 2565

** Come into force on 7th February 2023



Promoter
at least 2 people



Shareholder
at least 2
people



Contacts:

- DBD Call Center 1570
- Line Official Account for Business Registration
@058pnhyc
- e-Registration Support Center Tel. 02-547-5995 – 8
Business Registration Division Tel. 02-547-4431-32

